



Esteem XL



Serial #: 1JSLECBSXT12U8109
 Model: 32U ESTEEM XL MHC
 VIN#: 1FDFF5HT7SDA17289
 Model Year: 2026 Dealer Name: RV COUNTRY

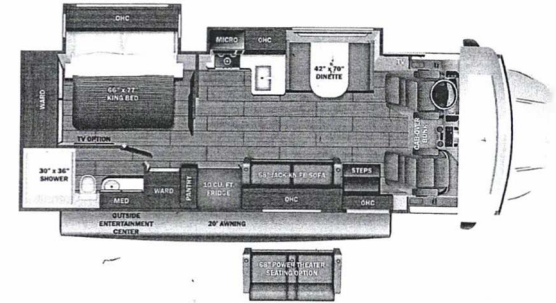
399 LEGENDS BAY DR
 SPARKS, NV 89434
 USA

Manufacturer's Suggested Retail Price

\$306,525.00

TOTAL AMOUNT DOES NOT INCLUDE STATE AND LOCAL TAXES OR LICENSE FEES. THE PRICE SHOWN ABOVE MAY OR MAY NOT BE REPRESENTATIVE OF THE ACTUAL SELLING PRICE OF SIMILAR RECREATIONAL VEHICLES IN YOUR AREA.

46396



Standard Equipment

Optional Equipment

THE FOLLOWING ITEMS ARE STANDARD ON THIS MODEL

OPTIONAL EQUIPMENT INSTALLED ON THIS VEHICLE BY MANUFACTURER

- STANDARD EXTERIOR EQUIPMENT**
- Ford® F550 4X4 chassis (30M, 32U)
 - Ford® F600 4X4 chassis (33F)
 - GVWR - 19,500 lb. (30M, 32U); 22,000 lb. (33F)
 - GCWR - 31,500 lb. (30M, 32U); 34,000 lb. (33F)
 - 6.7L Power Stroke V8 Turbo diesel engine with block heater - 330 HP at 2,200 RPM and 950 ft. lb. torque at 1,800 RPM
 - 10-speed automatic transmission
 - 332-amp alternator
 - G-rated tires- 225/70R19.5 (30M, 32U)
 - All-terrain tires - 245/70R19.5 (33F)
 - Steel wheels with matte black liners
 - 12,000 lb. rear hitch receiver
 - 7-pin plug
 - Hellwig® helper springs (30M, 32U)
 - Ford® AdvanceTrac® with RSC® (roll stability control) and trailer sway control
 - Integrated trailer brake controller
 - Dual chassis batteries (750 CCA 78 AH)
 - Dual fuel tanks (26.5 gal. and 40 gal.)
 - 2 in. rear lift
 - TuffShell™ vacuum-bond laminated roof, floor and sidewalls
 - Bead-foam insulation (R-24 max roof, R-9 max floor, R-5 max walls)
 - One-piece, seamless, fiberglass roof
 - Fiberglass exterior walls with partial paint and vinyl graphics
 - Entrance door with industry's largest travel-view window
 - Electric-powered entrance step with integrated house battery compartment
 - Slideout awning(s)
 - Exterior LED HD Smart TV with (2) JBL® high-output, marine-grade exterior speakers
 - Lockable storage compartments with slam latches
 - Third brake light
 - Roof ladder
 - Prep for satellite dish
 - Cable TV hookup with RG-6 coax
 - Winegard 2.0 Wi-Fi/G antenna
 - (2) 6V AGM house batteries
 - Transfer switch with reverse polarity protection
 - 50-amp electrical service
 - Detachable power cord
 - 16.5 gal. propane tank (56 lb.)
 - LP quick-connect hookup
 - Heated holding tanks (12V pads)
 - Exterior utility center
 - Winterization drain system
 - Black tank flush
 - Outside shower
 - 12V demand water pump
 - Water filtration system
- CUSTOMER VALUE PACKAGE**
- E-Z Drive™ Elite: Computer-balanced driveshaft, heavy-duty rear stabilizer bar and standard front stabilizer bar
 - One-piece, seamless fiberglass front cap
 - Automotive-bonded panoramic window in front cap with power shade
 - Automatic hydraulic leveling jacks
 - Frameless windows
 - Electric patio awning with LED lights
 - 6,000W diesel generator with auto-gen start
 - 2,000W inverter
 - 15,000 BTU A/C with heat pump
 - 200W solar panel with dual controller and second house battery
 - Entegra Multiplex system - wall-mounted touchscreen and mobile app for total coach control
 - LED HD Smart TV in living area

- STANDARD INTERIOR EQUIPMENT**
- Ford® SYNC® 4 infotainment center with Apple® CarPlay™ and Android Auto™
 - Audible lane departure warning
 - Pre-Collision Assist® with automatic emergency braking (AEB)
 - SOS Post Crash Alert System™
 - Driver and passenger airbags
 - Safety Canopy® system with roll-fold side-curtain airbags
 - Remote keyless entry and perimeter anti-theft alarm
 - SecurLock® anti-theft ignition
 - Quad dual-beam halogen headlights
 - Rainlamp wiper activated headlights
 - Remote start
 - Adjustable gas/brake pedals
 - Cruise control
 - Power windows and door locks
 - Auxiliary start switch
 - 8-way power driver seat
 - Tilt steering wheel
 - Custom-molded ABS surround in cab-over area
 - Overhead bunk with 750 lb. capacity and safety net
 - Privacy curtain for cab area
 - 84 in. interior ceiling height with padded vinyl ceiling
 - High-intensity recessed LED ceiling lights
 - LED-ill fascia
 - Hardwood cabinet doors and drawer fronts
 - Soft-close cabinet doors and drawers
 - Deluxe hidden cabinet hinges
 - Ball-bearing drawer guides
 - Blackout night roller shades
 - 30,000 BTU auto-ignition furnace
 - 10 gal. gas/electric water heater
 - JBL® audio system
 - U-shaped dinette (30M)
 - Entegra-exclusive, easy-operation legless dinette table (32U/33F)
 - 2-point lap safety belts in all designated seating locations
 - Car seat tethers (select floorplans)
 - 10 cu. ft. 12V refrigerator
 - All-in-one cooktop and oven
 - Residential-size microwave
 - Recessed stainless steel kitchen sink with sink covers
 - Solid-surface kitchen countertops
 - Decorative kitchen backsplash
 - Pop-up charging station in kitchen with 120V outlets and USB ports
 - Queen-size power Murphy Bed (30M)
 - Queen-size bed with bedspread and nightstands (33F)
 - Walkaround, king-size bed with bedspread and nightstands (32U)
 - USB port and wireless charging in nightstands
 - Large wardrobes
 - Bunks with industry-exclusive 300 lb. capacity each (33F)
 - Shower with decorative surround, glass door, skylight and light
 - Aqua View® SHOWERMISER™ water management system
 - Recessed stainless steel bathroom sink
 - Toilet with foot flush
 - Powered roof vent in bathroom with wall switch
 - Carbon monoxide detector
 - Fire extinguisher

Base price	275,550.00
STILLWATER DECOR	n/c
ABLAZE SILVER PARTIAL PAINT	n/c
USA STANDARDS	n/c
CHASSIS STANDARD - F550	n/c
CUSTOMER VALUE PACKAGE	25,493.00
BEDROOM TV	413.00
DUAL ACS	1,193.00
10 CU. FT. 12V REFRIGERATOR	n/c
STEEL RIMS	n/c
FOLDING WINDSHIELD SUN SHADE	488.00
THEATER SEATING SOFA	2,093.00

UNIT TOTAL	305,230.00
DEALER INSTALLED OPTIONS*	
FREIGHT	1,295
TOTAL MSRP	306,525.00

DIMENSIONS

Exterior height:150.00"
 Exterior width:101.00"

CAPACITIES

Fresh water tank (gals.):42.50
 Gray water tank (gals.):31.00
 Black water/toilet tank (gals.):31.00
 Propane (lbs.):83
 Propane (gals.):19
 water heater (gals.):10.00

TIRES

Tire size (front):225/70R19.5G
 Tire size (mid):
 Tire size (rear):225/70R19.5G

Some dimensions may be rounded and may vary from the actual dimensions
 Weights may be estimated calculations and may vary from the actual weight - refer to the vehicle weight labels for actual weights
 Floorplans, features and specifications are subject to change without notice.

