



ExpansE



Serial #: 1JSREBBJ5T1CL8053
 Model: 21L EXPANSE MHB
 VIN#: 1FDRU8UG1TKA41601
 Model Year: 2026 Dealer Name: RV COUNTRY INC.
 3633 SOUTH MAPLE
 FRESNO, CA 93725
 USA

Manufacturer's Suggested Retail Price

\$216,151.00

TOTAL AMOUNT DOES NOT INCLUDE STATE AND LOCAL TAXES OR LICENSE FEES. THE PRICE SHOWN ABOVE MAY OR MAY NOT BE REPRESENTATIVE OF THE ACTUAL SELLING PRICE OF SIMILAR RECREATIONAL VEHICLES IN YOUR AREA.

47387

Standard Equipment

THE FOLLOWING ITEMS ARE STANDARD ON THIS MODEL

STANDARD EXTERIOR EQUIPMENT

- Ford® Transit AWD 350HD
- 148 in. wheelbase
- GVWR - 11,000 lb.
- GCWR - 13,000 lb.
- 3.5L EcoBoost V6 310 HP engine with 400 ft-lb. torque
- 10-speed transmission
- 3.73 limited slip axle
- 250-amp alternator
- 205/75R16C BSW all-season tires
- Aluminum wheels
- Heavy-duty trailer tow package with dual 4/7 pin connector
- (2) 12V AGM chassis batteries (70 amp-hr)
- 25 gal. fuel tank (gas)
- Fiberglass running boards for cab and entry doors
- Keyless entry pad
- Daytime running headlamps
- Cable TV hookup with RG-6 coax
- 2,800W gas generator with auto-gen start
- 200W roof-mounted GoPower® solar panel with integrated control panel
- Portable solar plug
- 1,000W inverter (21B)
- 2,000W inverter (21T)
- (2) 12V AGM house batteries
- House battery disconnect switch
- 30-amp electrical service with detachable power cord
- (2) 120V exterior outlets
- 6 gal. propane tank (20 lb.) (21B)
- LP quick-connect hookup (21B)
- Heated grey holding tank (12V pad)
- LED-lit holding tank valves
- Black tank flush
- Winterization drain system
- 12V demand water pump
- Water filtration system
- Outside shower

- ### CUSTOMER VALUE PACKAGE
- E-Z Drive™: Hellwig® helper springs, rear Koni® shocks
 - Carefree® armless motion sensing patio awning with LED light strip
 - Truma Combi Eco Plus water heater and furnace
 - 4-way swivel driver and passenger seats
 - Winegard® Air 360 TV antenna

STANDARD INTERIOR EQUIPMENT

- 12 in. SYNC 4 HD/NAVI/ACC multi-function display
- Power-adjusting side-view mirrors
- 360° camera with split view and front camera washer
- Rear-view camera with trailer hitch assist
- Blind spot assist 1.0 with trailer coverage and cross-traffic alert
- Intelligent adaptive cruise control
- Lane-keeping system
- Front, side and reverse sensing systems
- Forward collision warning
- Pre-collision assist with automatic emergency braking (AEB)
- Post-collision braking
- SOS Post Crash Alert System™
- Driver and passenger airbags
- Safety Canopy® side-curtain airbags
- Ford® AdvanceTrac® with RSC® (roll stability control)
- Side wind stabilization
- Hill start assist
- Securilock® passive anti-theft system with engine immobilizer
- Autolocking drive away with crash unlocking
- Remote keyless entry
- FordPass™ Connect
- Tire pressure monitoring system (TPMS)
- Rain-sensing wiper system
- Automatic high-beam headlights
- Wiper-activated headlights
- Power windows and door locks
- Privacy shades for cab windows
- Custom-molded ABS interior wall panels
- Soft-touch vinyl ceiling
- High-intensity LED ceiling lights
- Tecnoform® European-style, high-gloss cabinetry
- Ball-bearing drawer guides
- Residential vinyl flooring
- Firefly Multiplex system - wall-mounted touchscreen and mobile app for total coach control
- 120V Coleman®-Mach® 10 13,500 BTU air conditioner
- Powered roof vent in living area
- Side screen door with magnetic and zipper close offs
- Sliding vented windows
- Rear screen door with roll-up and black-out capabilities (21B)
- Removable privacy shade for sliding door window
- 24 in. LED HD TV
- Adjustable table with multiple mounts and fold-down work station
- 5.3 cu. ft. 12V refrigerator (21B)
- 3.1 cu. Refrigerator (21T)
- 2-burner gas cooktop (21B)
- Convection microwave (21B)
- Microwave (21T)
- Soft-close overhead cabinet doors (21T)
- Stainless steel sink
- Solid-surface kitchen countertop
- Power sofa converts to 68 in. x 76 in. bed (21B)
- 2 23" x 76" in. beds that convert to 61" x 76" bed (21T)
- Charging station (21T)
- Shower with magnetic curtain
- Aqua View® SHOWERMISER™ water management system
- Toilet with foot flush
- Powered roof vent in bathroom
- Seatbelts for driver/passenger seats and select cab locations
- Smoke alarm
- Carbon monoxide detector
- Fire extinguisher

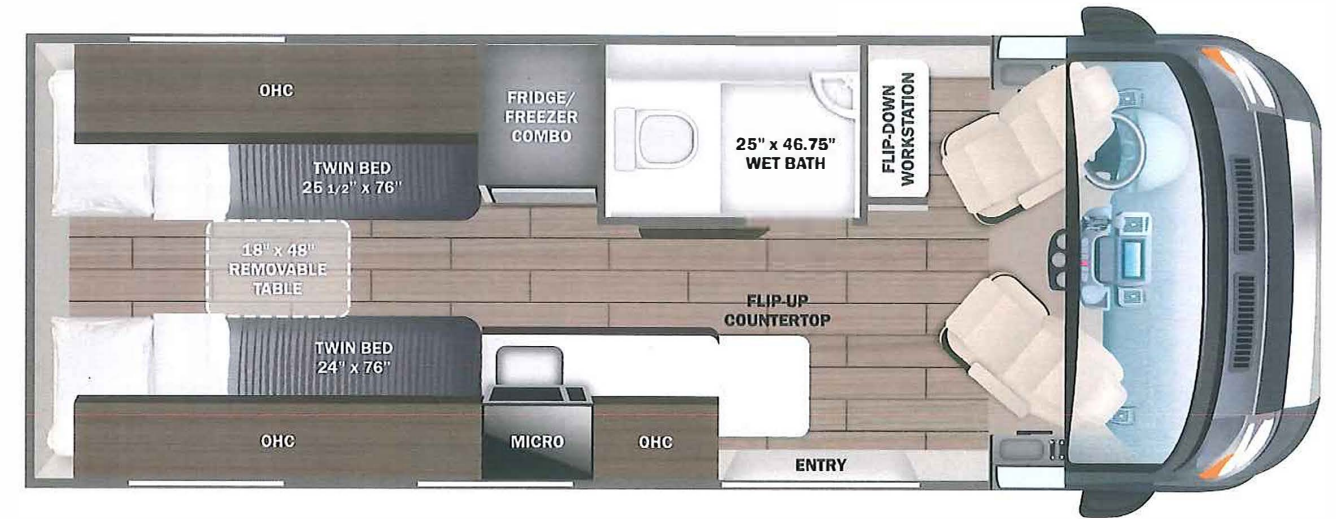
Optional Equipment

OPTIONAL EQUIPMENT INSTALLED ON THIS VEHICLE BY MANUFACTURER

Base price	195,683.00
MERIDIAN DECOR	n/c
USA STANDARDS	n/c
26 FORD TRAN VAN AWD SIL	
350HD 11000 148" TD409	n/c
SILVER CHASSIS EXTERIOR	30.00
CUSTOMER VALUE PACKAGE	18,000.00
STARLINK SATELLITE SYSTEM	893.00

FREIGHT	1,545.00
UNIT TOTAL	216,151.00

DEALER INSTALLED OPTIONS



DIMENSIONS

Exterior height:.....120.00"
 Exterior width:.....86.00"

CAPACITIES

Fresh water tank (gals.):...24.00
 Gray water tank (gals.):...14.00
 Black water/toilet tank (gals.):.....16.00
 Propane (lbs.):.....0
 Propane (gals.):.....0
 Water heater (gals.):.....0.00

TIRES

Tire size (front):.....LT205/75R16C
 Tire size (mid):.....
 Tire size (rear):.....LT205/75R16C

Some dimensions may be rounded and may vary from the actual dimensions
 Weights may be estimated calculations and may vary from the actual weight - refer to the vehicle weight labels for actual weights
 Floorplans, features and specifications are subject to change without notice.

